



ESP is wishing a Happy  
International Pathology day 2022  
to all!



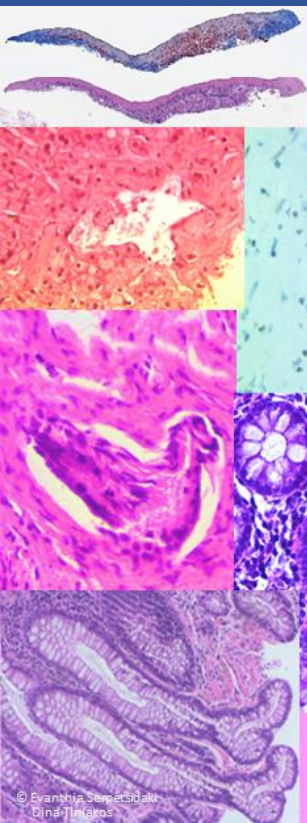
Η μεγάλη οικογένεια της Παθολογικής Ανατομικής

ff  
"La Grande Famille",  
René Magritte (1963)

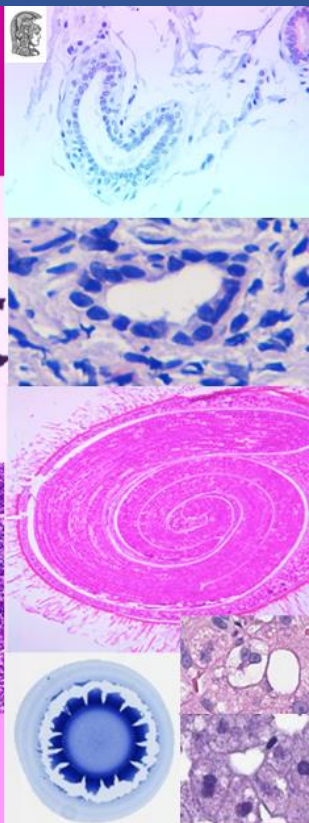
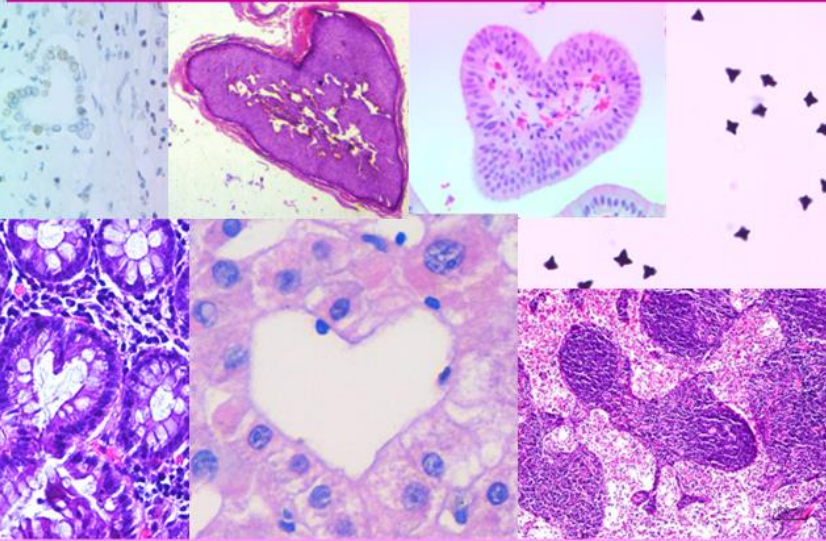
ΠΑΓΚΟΣΜΙΑ ΗΜΕΡΑ ΠΑΘΟΛΟΓΙΚΗΣ ΑΝΑΤΟΜΙΚΗΣ  
ΤΕΤΑΡΤΗ 9 ΝΟΕΜΒΡΙΟΥ 2022



Ελληνική  
Εταιρεία  
Παθολογικής  
Ανατομικής



**Pathology**  
In the HEART of prevention, diagnosis  
and treatment



International Pathology Day  
Wednesday 9 November 2022

© Evarnthia Serpetidou  
Dina Tziakos

# Dia Internacional da Anatomia Patológica

International Pathology Day

09 de Novembro de 2022



TECIDOS,  
CÉLULAS E DNA  
CIRCULANTE



MICROSCÓPIA



PROTEÓMICA



GENÓMICA



INTELIGÊNCIA  
ARTIFICIAL

DIAGNÓSTICO DE PRECISÃO

TERAPÊUTICA CORRECTA E ATEMPADA  
MAIS QUALIDADE DE VIDA  
MAIS SAÚDE  
MENOS EFEITOS SECUNDÁRIOS  
MENOS TEMPO NO HOSPITAL



Líder no caminho para a  
medicina de precisão!



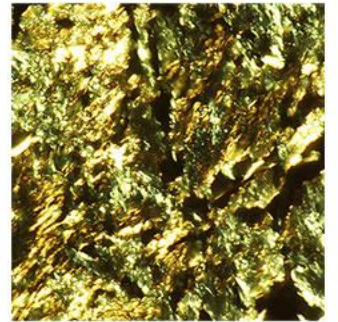
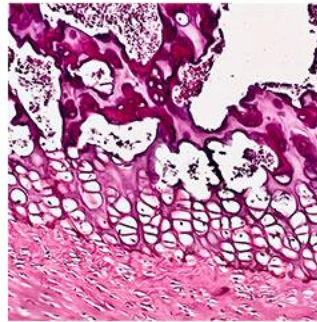
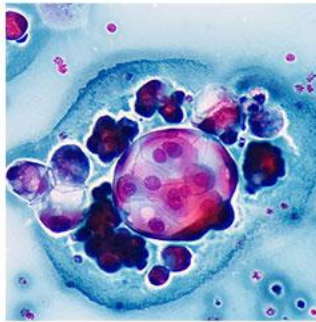
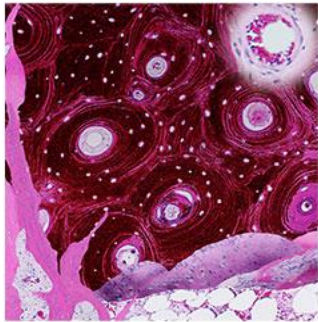
# FINDING THE RIGHT PATH THROUGH THE COLORFUL WORLD OF DISEASES

A surgical procedure is never complete without pathological examination

*Happy*

# INTERNATIONAL PATHOLOGY DAY

9 NOVEMBER 2022



## HAPPY INTERNATIONAL PATHOLOGY DAY 2022

